

DURO-LOC COMMERCIAL MATS AND LOGO MATS

Duro-loc represents the top quality in durable indoor and outdoor matting. These 1/2" thick mats are made of long lasting, non-absorbent olefin fibers. Made with a high profile vinyl edging that is attached by both sewing and glueing for permanent bonding.



SPECIFICATIONS

Construction—Needlepunch
Fiber Weight—45 oz. y²
Backing—All weather rubber
Logo Method—Sonic cutting inlaid
Total Weight—93 oz. y²
Warranty—3 Years



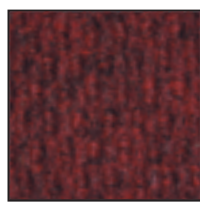
Standard Sizes:

3'x5', 4'x6', 4'x8', 4'x10', 6'x8', 6'x10', 6'x12'

Custom sizes available up to 13'4" width by 68'6" length without seams. Custom shapes and larger size mats with seams are also available.

All sizes can be made with or without logos. Call 800-788-1408 for additional information or visit our website at www.daltonian.com.

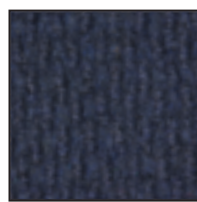
Base color—Select from Duronop or Lombok colors only; inlay colors see below.



Red Heather



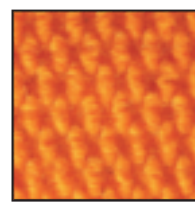
Green



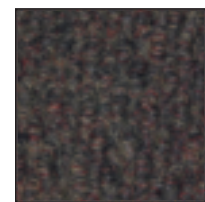
Dolphin Blue



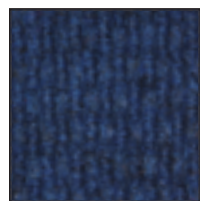
Prism



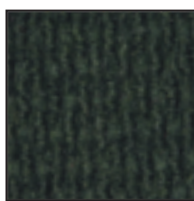
Orange



Autumn



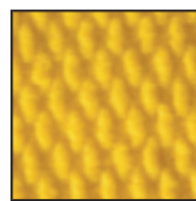
Lapis Blue



Evergreen



Sky Blue



Yellow



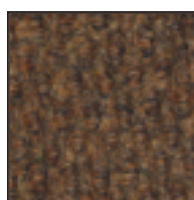
Bright Red



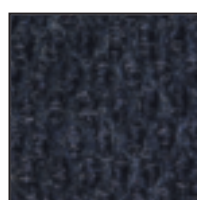
Black



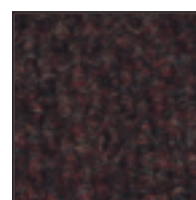
Sea Green



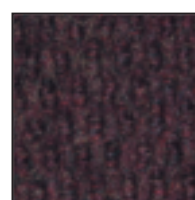
Zinc



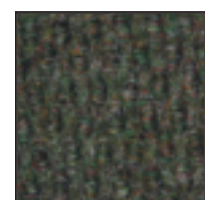
Midnight Blue



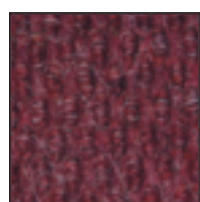
Rosewood



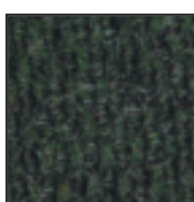
Garnet



Hunter Green



Burgundy



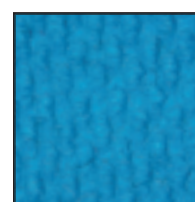
Dark Green



Taupe



Beige



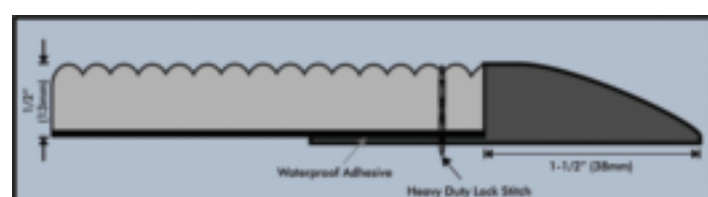
Aqua



White



1/2" High Profile Vinyl
Reducer Edging



130 EXECUTIVE DRIVE

CALHOUN, GA 30701

www.daltonian.com

E-Mail: sales@daltonian.com

Phone: 706-602-7478

Toll Free: 1-800-788-1408

Fax: 706-602-7823